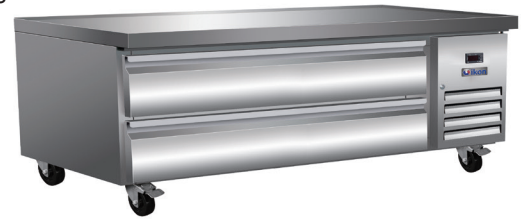


CHEF BASES

Features

- CFC free refrigerant and foam insulation
- Electronic thermostat and digital LED temperature display for accurate control and easy reading
- Easy to mount 4" casters (two lockable in front) are standard with all units
- Magnetic gasket can be replaced without any tools
- Stainless steel framework construction
- Auto defrosting and auto evaporation of condensation water
- 4" PC pans not included. Note: this unit cannot accommodate 6" PC pans
- Raised marine edge contains spills
- Exterior: 430 stainless steel top, front & sides. Aluminum back panel.
- Interior: Aluminum with a 304 stainless steel floor
- R-290 Natural refrigerant
- Temperature: 33 to 40°F / 0.5 to 4°C
- Electrical: 115/60/1 with NEMA 5-15P plug, 10ft cord



NEMA
5-15P



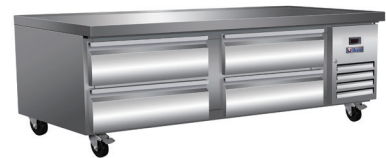
ICBR-38



ICBR-50



ICBR-62



ICBR-74

See page 37 for pan configurations.

Specifications

DESIGNED TO OPERATE IN AMBIENT TEMPERATURES BETWEEN 40F-90F FOR OPTIMUM PERFORMANCE.

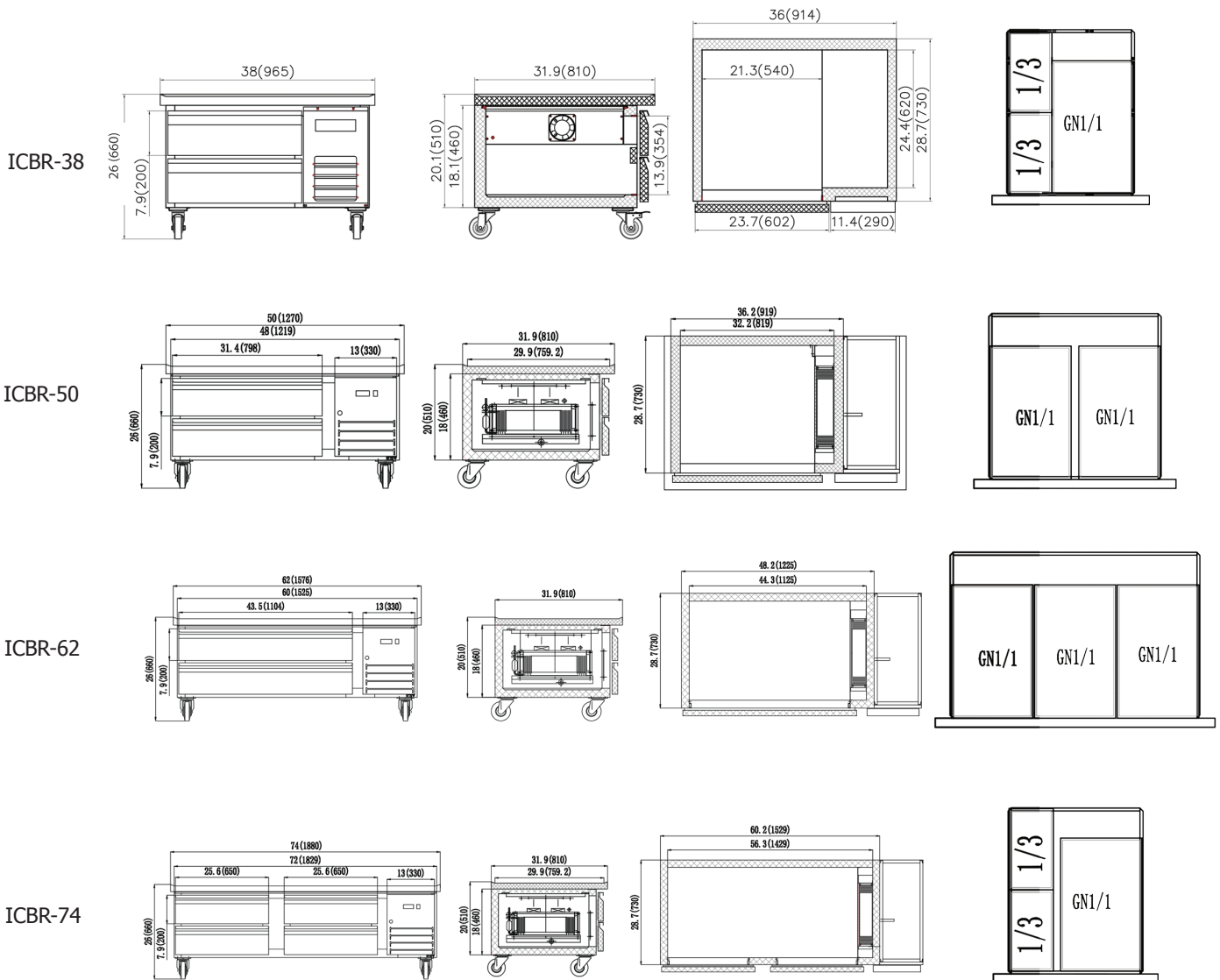


Model	Drawers	Ext. Dimensions W X D X H (In)	Int.. Dimensions W X D X H (In)	Amps	H.P	Ship Weight
ICBR-38	2	38 X 31.9 X 26	21.3 X 26.8 X 13.9	2.1	1/3	205 lbs
ICBR-50	2	50 X 31.9 X 26	28.2 X 26.8 X 13.9	2.1	1/3	260 lbs
ICBR-62	2	62 X 31.9 X 26	40.2 X 26.8 X 13.9	2.1	1/3	302 lbs
ICBR-74	4	74 X 31.9 X 26	52.2 X 26.8 X 13.9	2.1	1/3	353 lbs

CHEF BASES



Dimensions in inches (mm)



Tel.: 786.600.4687 / Toll Free: 844.218.8477
Fax: 786.661.4100

3560 NW 56th St.
Fort Lauderdale, FL 33309 USA



Tel.: 514.737.9701 / Toll Free: 888.275.4538
Fax: 514.342.3854 / Toll Free: 877.453.8832
sales@mvpgroupcorp.com

5659 Royalmount Ave.
Montreal, QC H4P2P9 CANADA